



# REGIONAL PLANNING IN THE SAN DIEGO REGION

*COLEEN CLEMENTSON, SANDAG  
SEPTEMBER 2010*

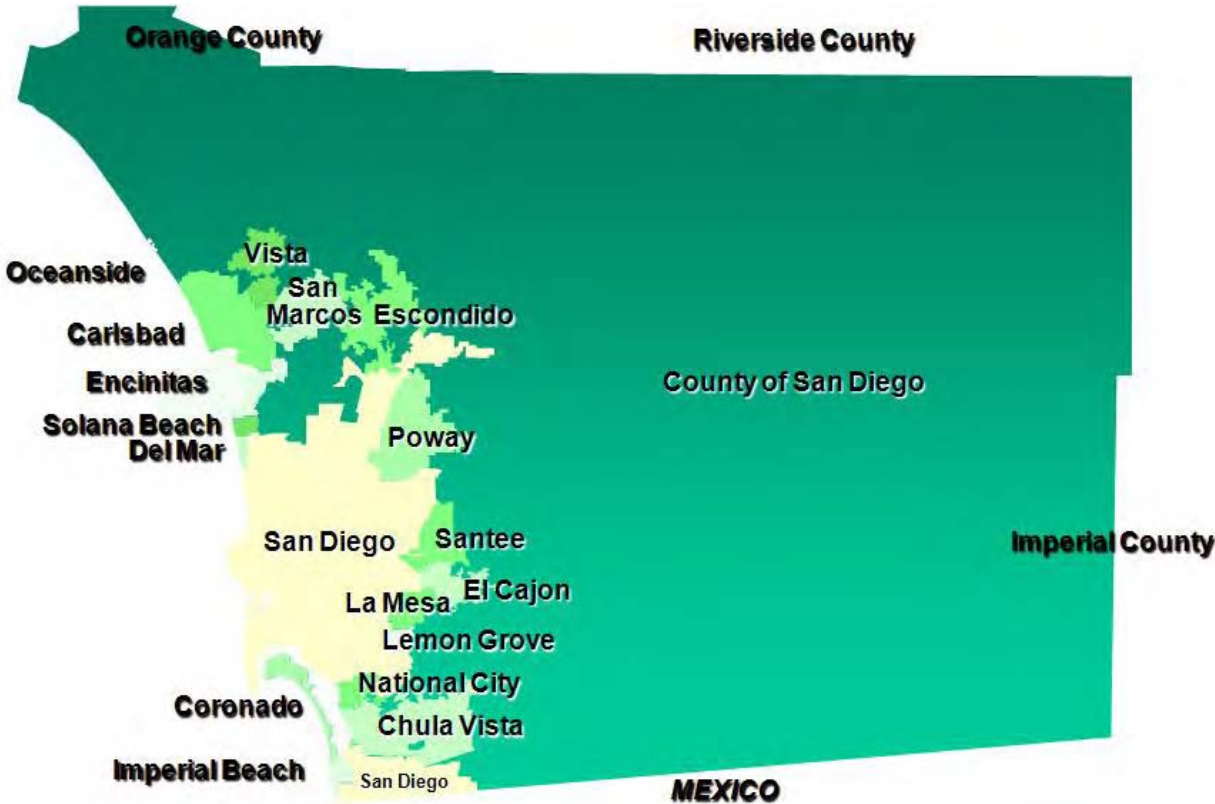


# AREA OF SAN DIEGO REGION

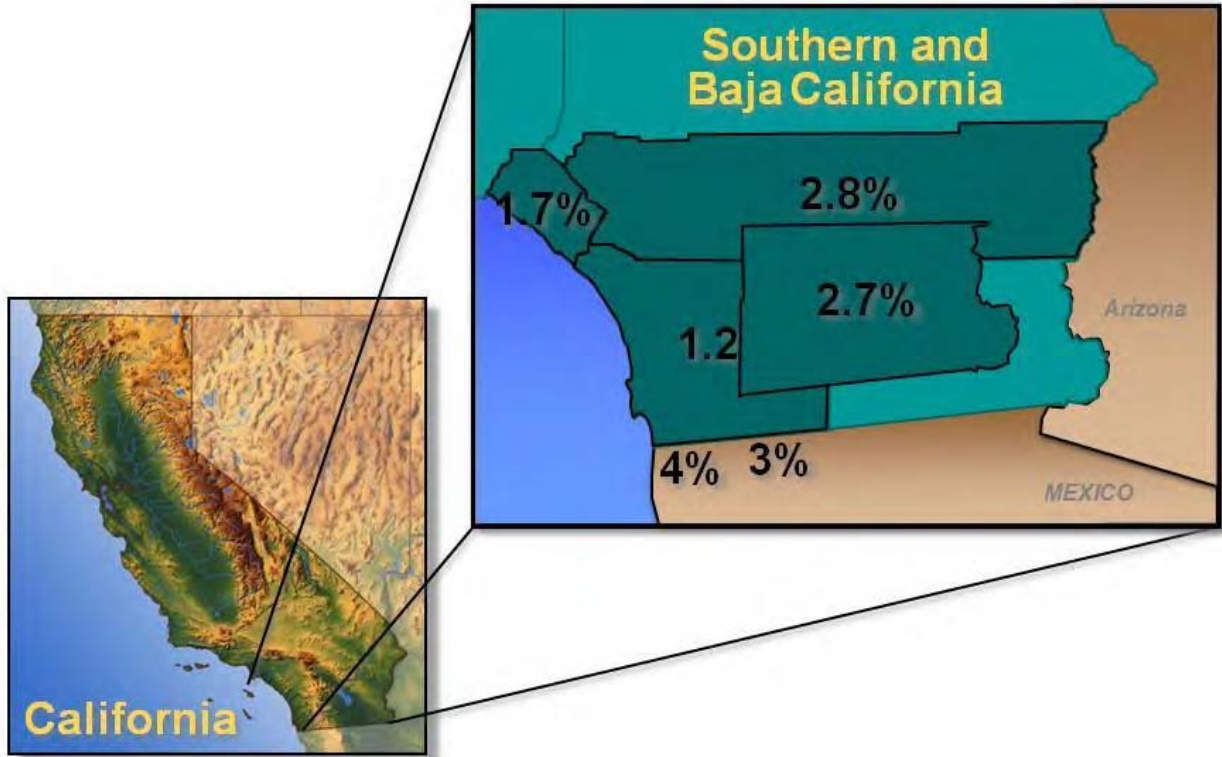
4,230 square miles



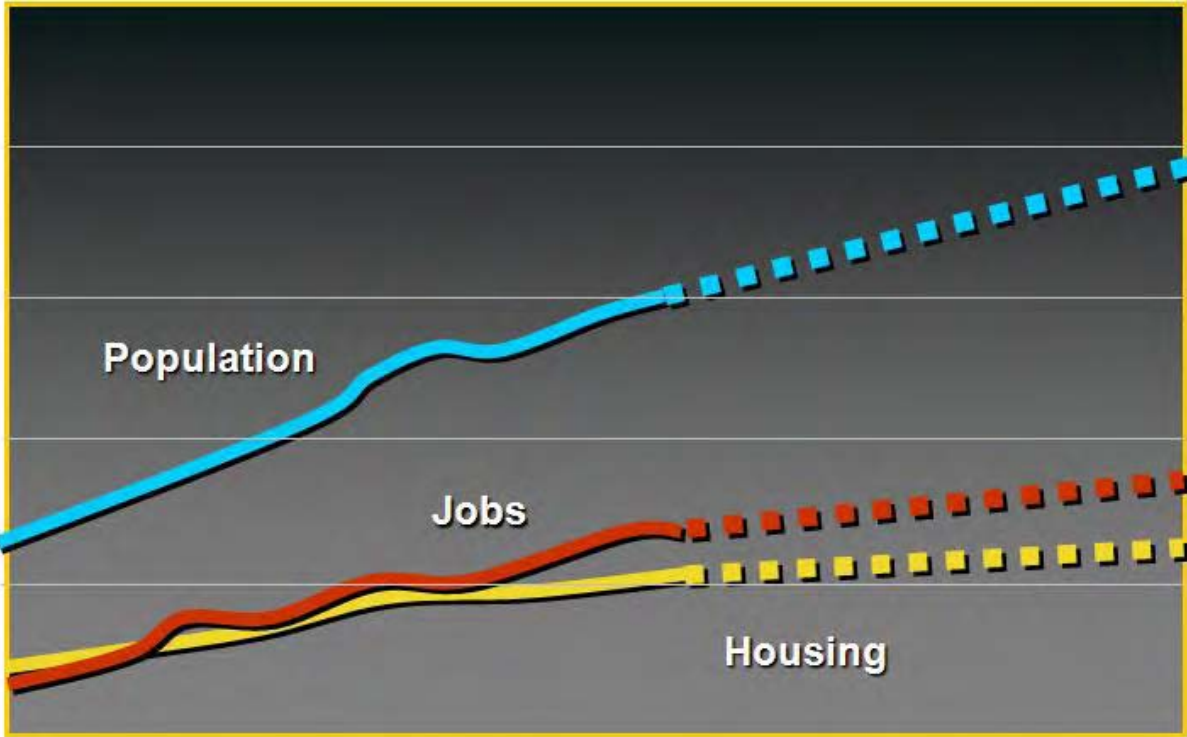
# SAN DIEGO JURISDICTIONS



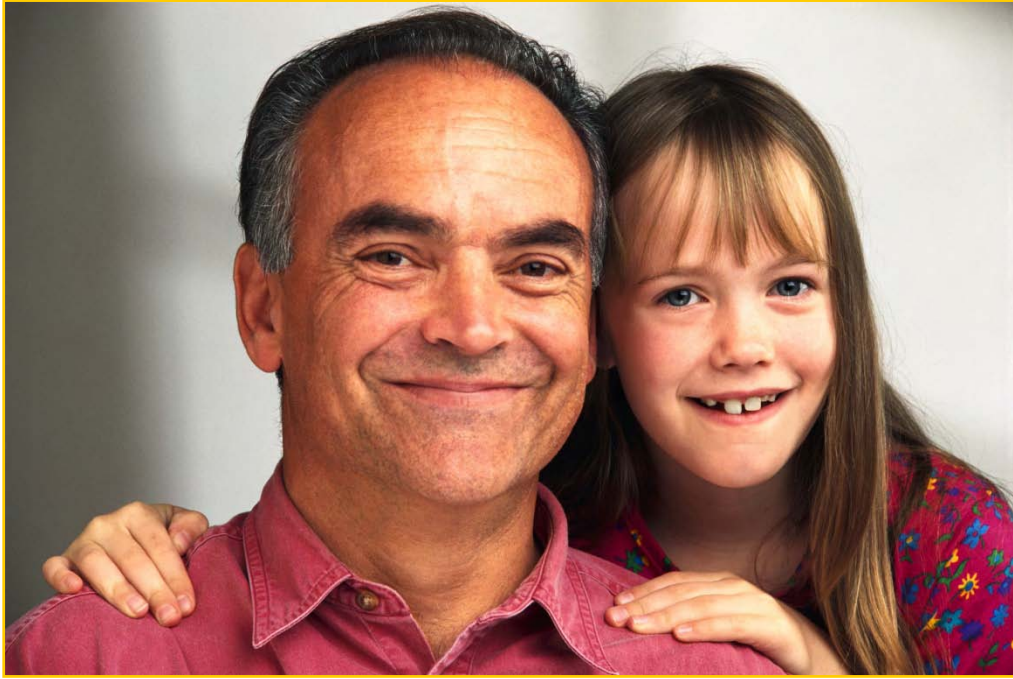
# ANNUAL AVERAGE GROWTH RATES



# A LOOK AT THE FUTURE



# CHANGING DEMOGRAPHICS



# WHO PLANS FOR THE REGION?

## Local/Regional Agencies:

- Local Cities and the County of San Diego
- SANDAG
- Metropolitan Transit System (MTS)
- North County Transit District (NCTD)
- San Diego Airport Authority
- San Diego Unified Port District
- San Diego County Water Authority
- Southern California Tribal Chairmen's Association
- San Diego Regional Energy Office
- Local Agency Formation Commission (LAFCO )
- Air Pollution Control District

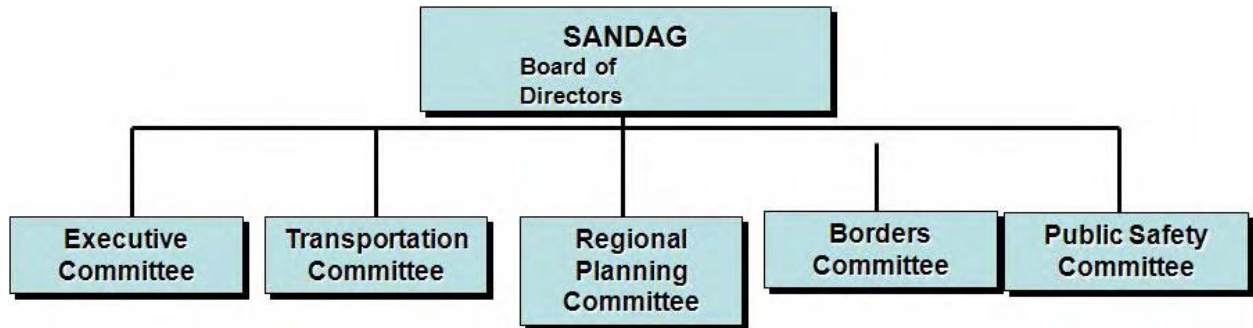
# WHO PLANS FOR THE REGION (CONT.)?

## State/Federal Agencies:

- *Caltrans*
- Regional Water Quality Control Board
- California Coastal Commission
- California Department of Fish and Game
- U.S. Fish and Wildlife Service
- U.S. Department of Defense



# SANDAG BOARD AND POLICY COMMITTEES



# SAN DIEGO REGIONAL COMPREHENSIVE PLAN

- **Urban Form**
- **Transportation**
- **Housing**
- **Healthy  
Environment**
- **Economic  
Prosperity**
- **Public Facilities**
- **Borders**



# REGIONAL VISION



**“Preserve and enhance the  
San Diego region’s unique features –  
its vibrant and culturally diverse communities,  
its beaches, deserts, mountains, lagoons, bluffs,  
and  
canyons, and its international setting –  
and promote sustainability,  
economic prosperity, and an outstanding  
quality of life for everyone.”**

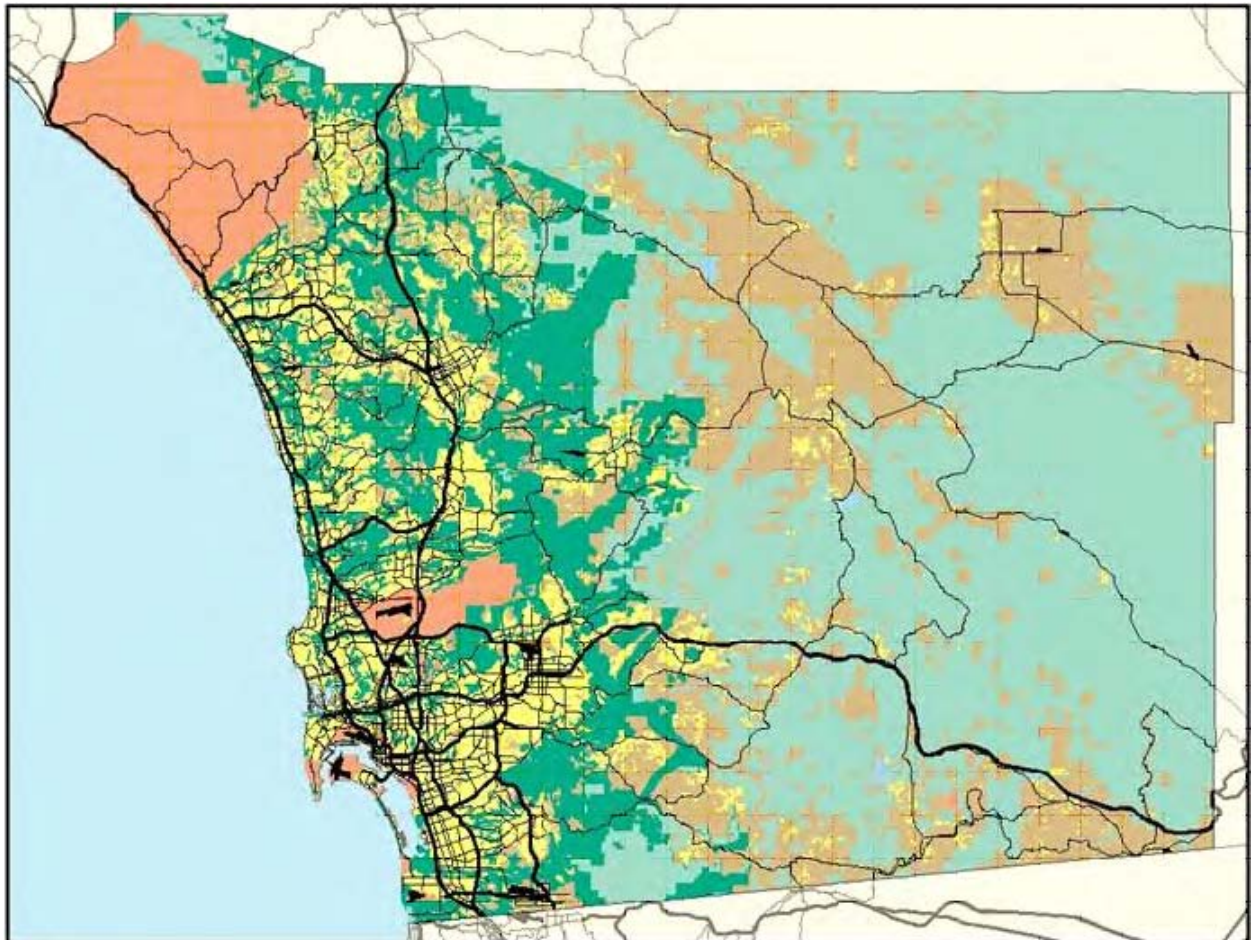


# A REGIONAL APPROACH



- **Connect land use and transportation plans**
- **Guide infrastructure investments**
- **Provide incentives and collaboration**

# LAND USE-TRANSPORTATION CONNECTION



# WHERE WE'VE BEEN...

## PAST 30 YEARS

### System Facts

- 53 miles of light rail transit
- 42 miles commuter rail
- Local bus service
- Transit centers
- Dial-A-Ride and ADA Services
- 95.5 million annual riders
  - 29 million trolley
  - 1.5 million Coaster
  - 65 million bus

### Growth 1975 – Present

- Transit ridership = 150%
- County population = 75%



# RCP SMART GROWTH PLACE TYPES

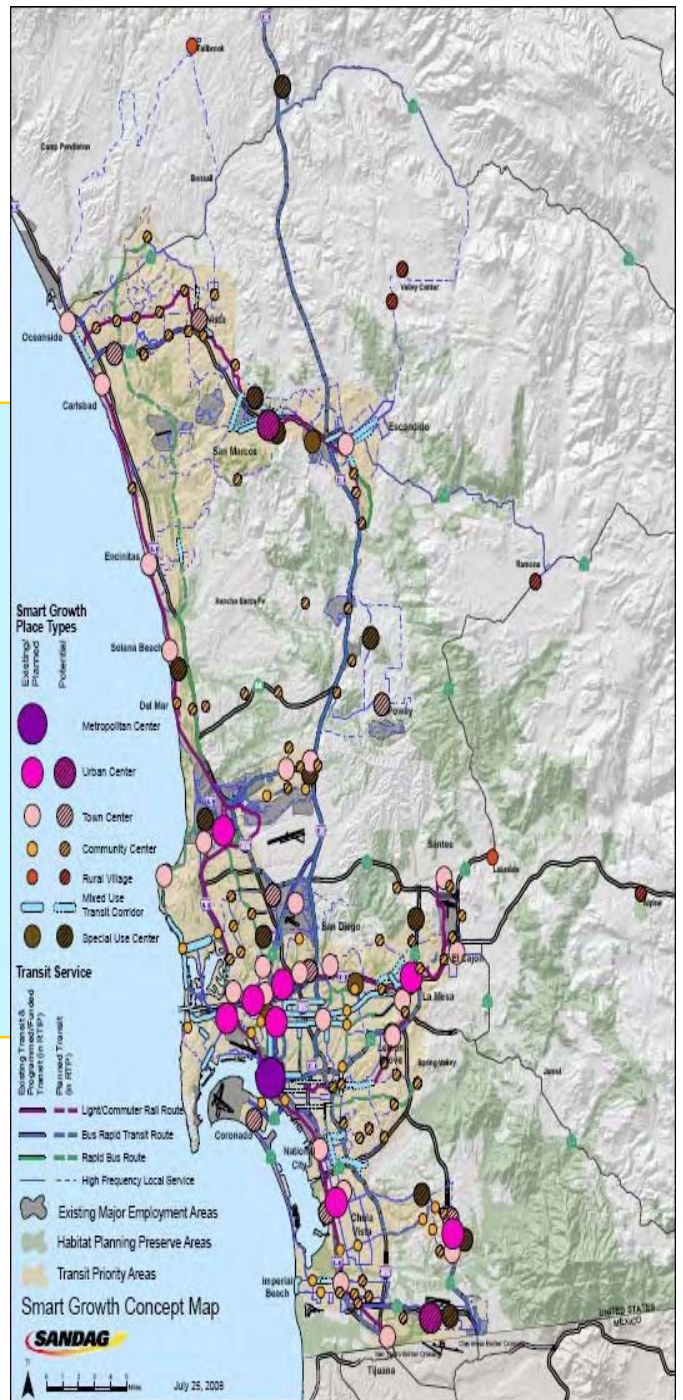


- Metropolitan Center**
- Urban Center**
- Town Center**
- Community Center**
- Mixed Use Transit Corridor**
- Special Use Center**
- Rural Village**

# SMART GROWTH CONCEPT MAP

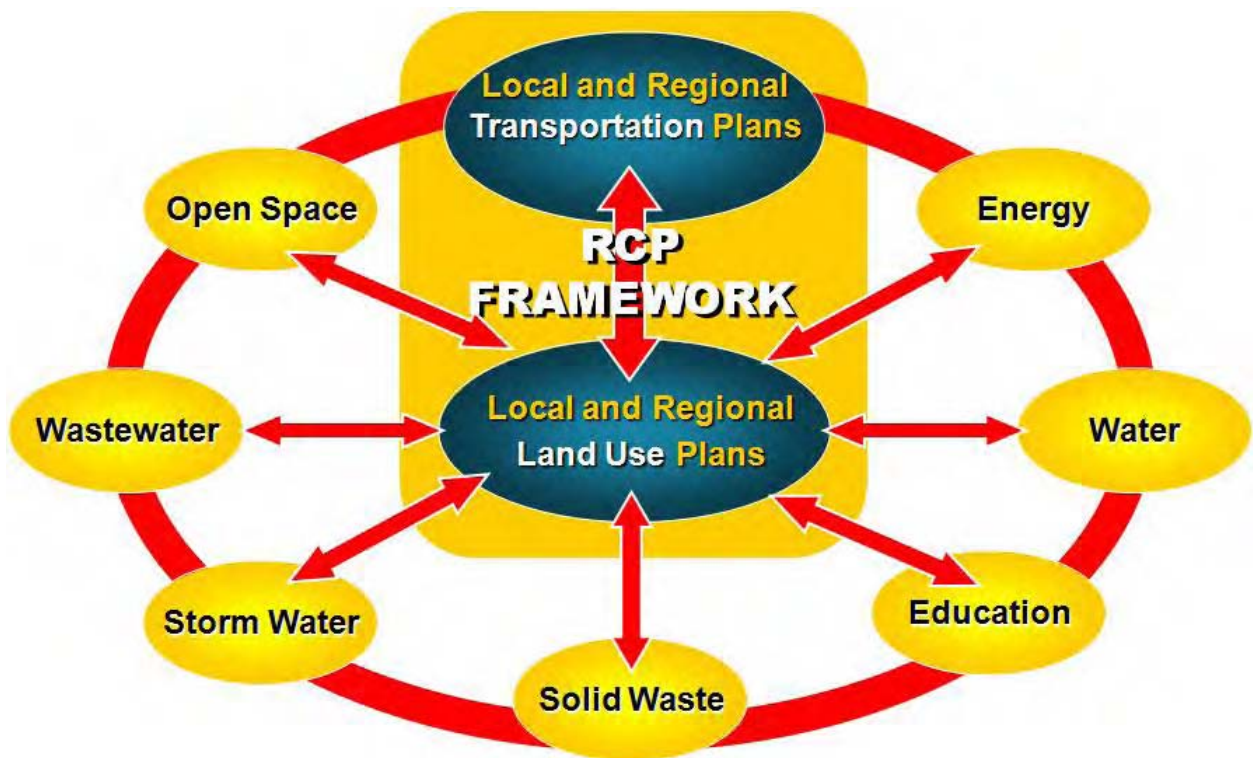
## Smart Growth Areas

Existing/ Planned	Potential	
		Metropolitan Center
		Urban Center
		Town Center
		Community Center
		Rural Village* (with core area)
		Mixed Use Transit Corridor
		Special Use Center





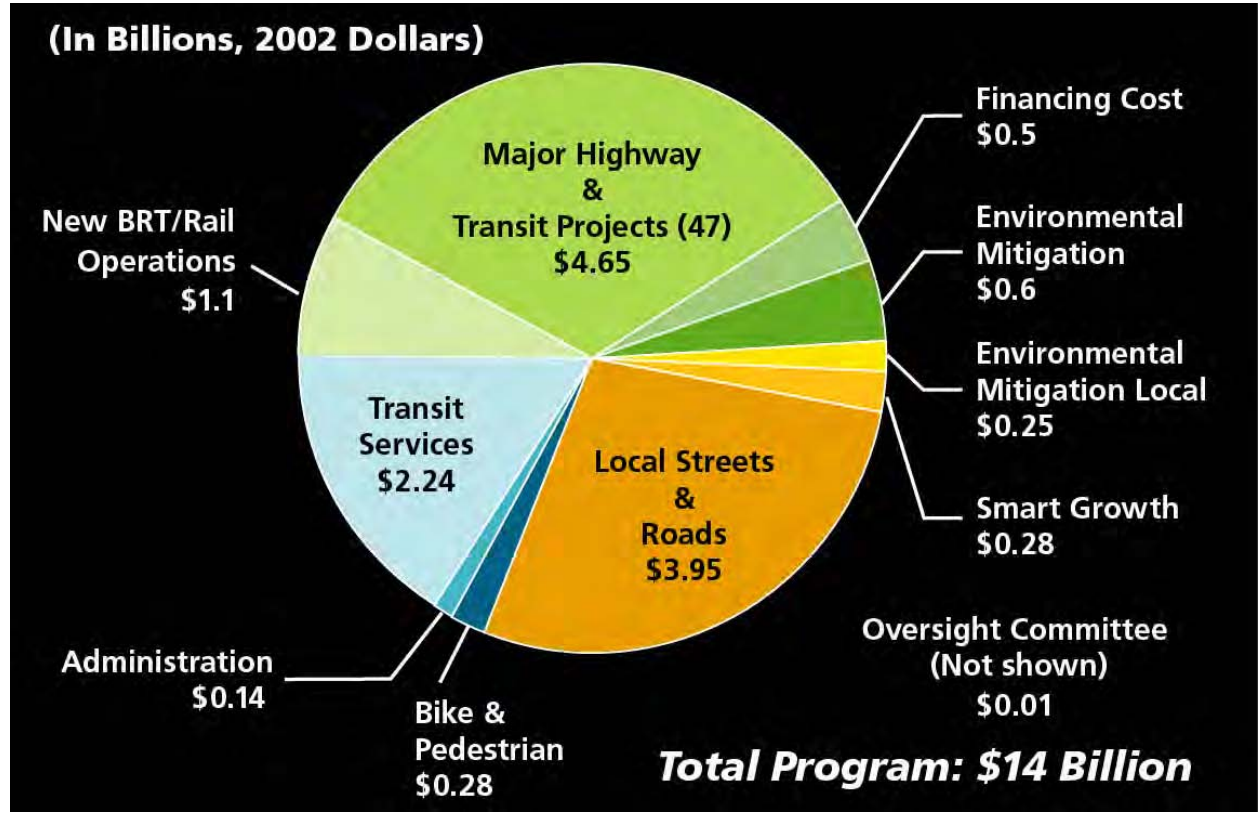
**USE OUR TRANSPORTATION & LAND USE  
PLANS  
TO *GUIDE* OUR INVESTMENTS**



# MAKE IT HAPPEN THROUGH INCENTIVES AND COLLABORATION



# 40 YEAR EXPENDITURE PLAN



# SMART GROWTH TOOL BOX

## Planning Tools

- **Smart Growth Concept Map**
- **Sketch Planning Tool**
- **Visual Simulations and Smart Growth Photo Library**
- **Smart Growth Design Guidelines**
- **Trip Generation/Parking Study**
- **San Diego Regional Bicycle Plan**

- **RCP Monitoring**

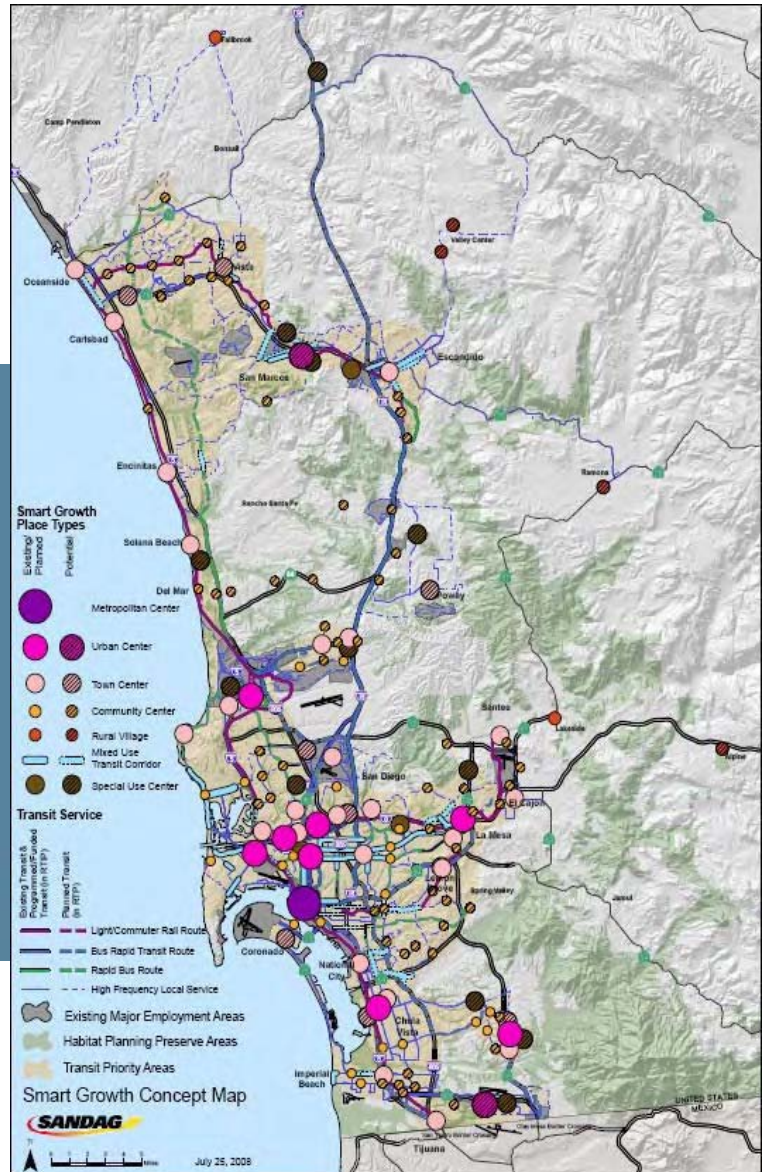
## Financing Tools

- **TransNet Smart Growth Incentive Program**
- *TransNet* **Environmental Mitigation Program**
- *TransNet* **Bike/Ped Neighborhood Safety Program**
- **Regional Housing and Smart Growth Financing Strategy**

# SMART GROWTH CONCEPT MAP

**Smart Growth Areas**

Existing/Planned	Potential	
		Metropolitan Center
		Urban Center
		Town Center
		Community Center
		Rural Village* (with core area)
		Mixed Use Transit Corridor
		Special Use Center



# ALPINE BOULEVARD – ALPINE, CA

*PLACE TYPE – RURAL VILLAGE*



**E STREET NEAR BAYFRONT/  
E STREET TROLLEY STATION – CHULA  
VISTA, CA**  
*PLACE TYPE: URBAN CENTER*



# SMART GROWTH PHOTO LIBRARY





# SMART GROWTH INCENTIVE PROGRAM



## Capital Improvements:

**2% of *TransNet* Sales Tax**

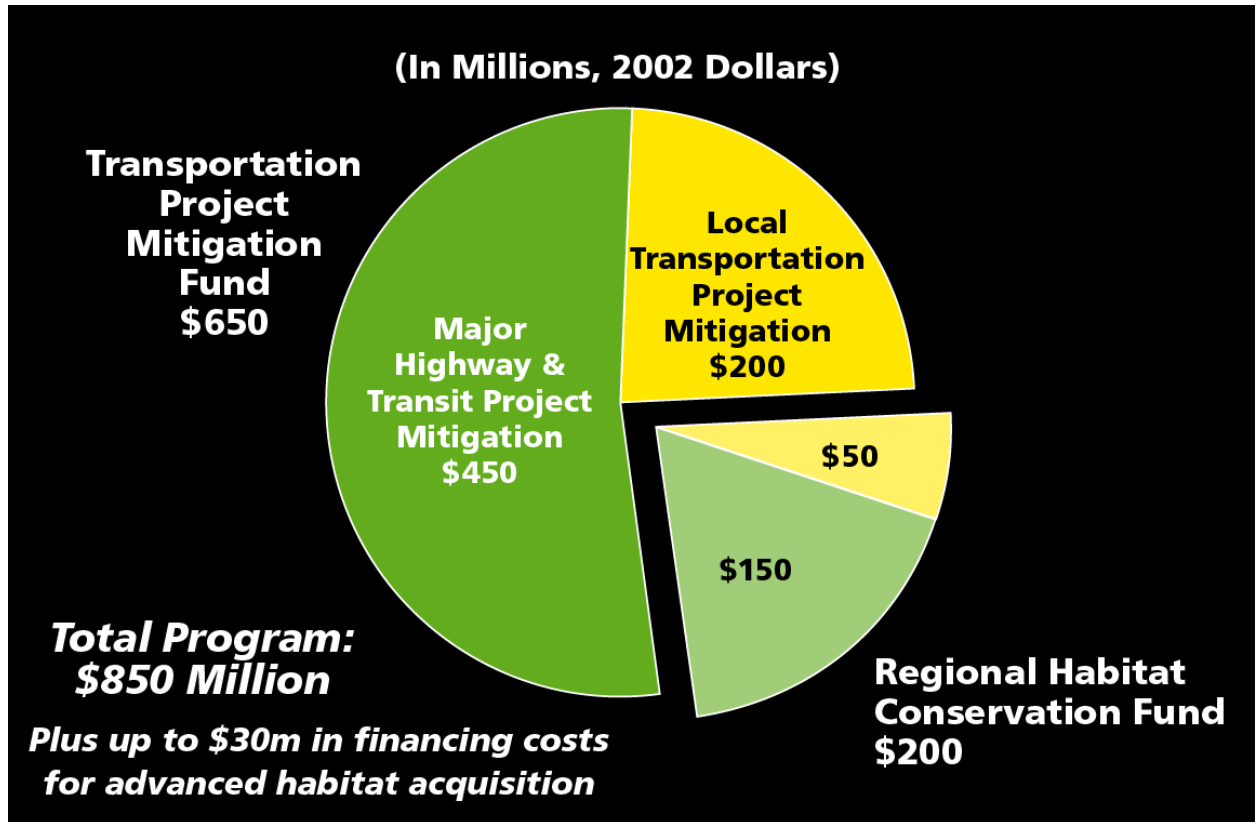
- Sidewalks, plazas
- Streetscape enhancements
- Improvements to transit stations
- Other community initiatives

## Planning Grants:

- General plan updates
- Specific plans



# ENVIRONMENTAL MITIGATION PROGRAM



# **REGIONAL HABITAT CONSERVATION FUND**

- \$200 million
- Available for regional habitat acquisition, management, and monitoring activities necessary to implement the MSCP and MHCP
- Funds to be distributed as “economic benefits” of program are accrued

# TRACKING OUR PROGRESS

**Report Card**

Transportation.....

Housing.....

Open Space.....

Public Facilities.....



# MILESTONES



2004: Regional Comprehensive Plan

2004: *TransNet* Extension

2005: Regional Housing Needs Assessment

2006: Smart Growth Concept Map

2006: Baseline Report for Performance Monitoring

2006: *TransNet* Environmental Mitigation Program

2006: Smart Growth Incentive Program

2007: Tribal Representation and Binational Strategic Plan

2008: 2030 Regional Transportation Plan

2010: Regional Bicycle Plan

2011: *2050 Regional Transportation Plan*